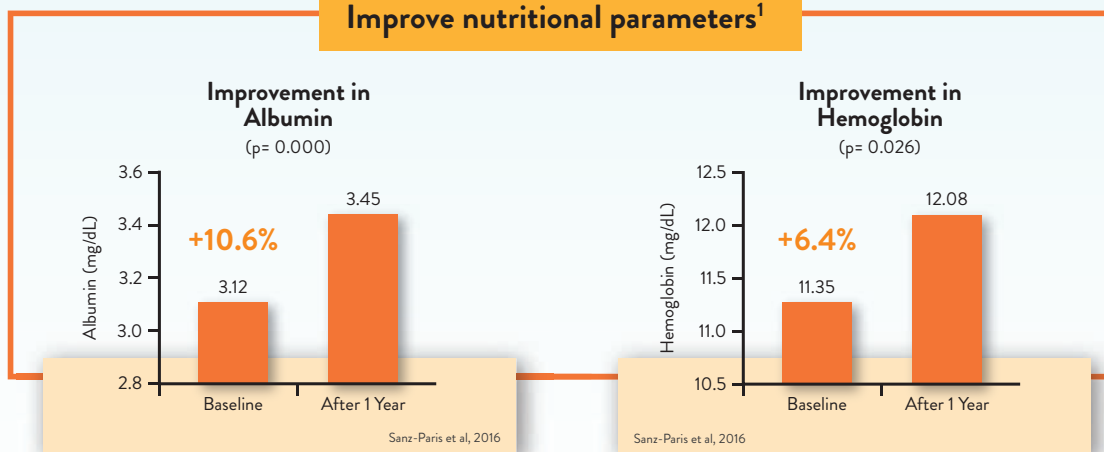


# IMPROVE OUTCOMES WITH

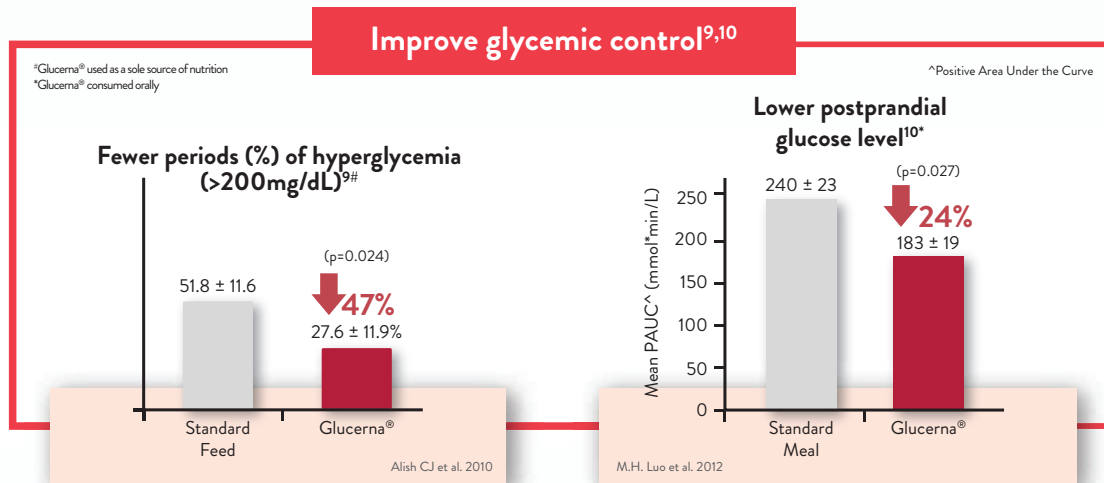


Your nutrition prescription will make a difference.

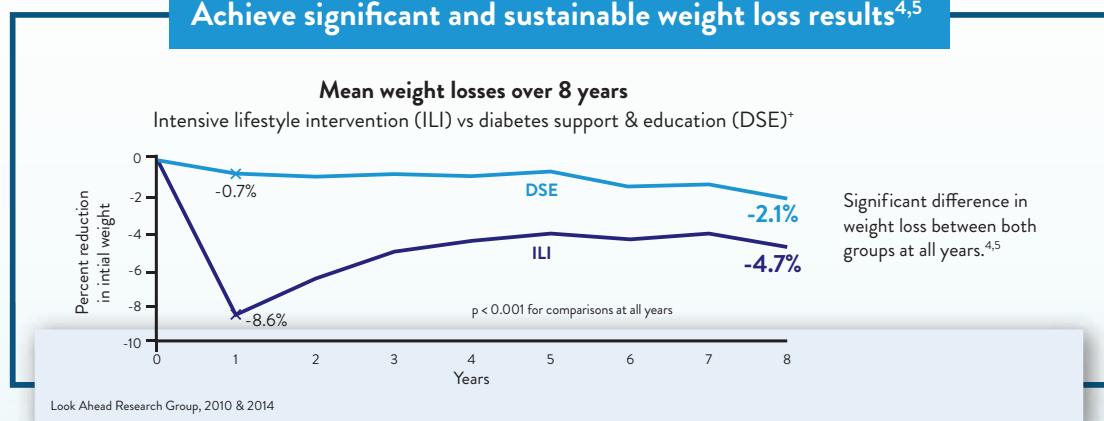
## Improve nutritional parameters<sup>1</sup>



## Improve glycemic control<sup>9,10</sup>



## Achieve significant and sustainable weight loss results<sup>4,5</sup>



\*The Action for Health in Diabetes (Look AHEAD) is a randomized trial comparing the effects of Intensive Lifestyle Intervention (ILI) focused on weight loss achieved through healthy eating and increased physical activity versus a control condition of Diabetes Support and Education (DSE) in overweight and obese individuals with type 2 diabetes. As part of the ILI program, DSF like Glucerna®, are used as meal replacements.

### References

1. Sanz-Paris, A. et al. Nutrients. 2016;8:153.
2. Alish, C.J. et al. Diabetes Technol Ther. 2010;12:419–425.
3. Luo, M. et al. Journal of Diabetes Mellitus, 2012(2):214-220.
4. The Look AHEAD Research Group. Obesity. 2014; 22:5–13.
5. The Look AHEAD Research Group. Arch Int Med. 2010; 170:1566–1575.



# Improving lives with nutrition

## EVERYDAY COMPLETE, BALANCED NUTRITION FOR ADULTS

Balanced proportions of protein, carbohydrate and fat with 28 vitamins and minerals. Lactose-Free. Gluten-Free.

### ENSURE® LIFE

Build Your Strength



400G & 850G

850G



400G & 850G

850G

- 1.0 kcal/ml
- 8.6g protein/serve
- 2.3g fiber/serve
- For sole source of nutrition or supplementation
- Vanilla, strawberry, chocolate & wheat flavours

### ENSURE® NUTRIVIGOR

Get Stronger



850G

- 1.0 kcal/ml
- 9.0g protein/serve
- 1.7g fiber/serve
- Enhanced with Acti-HMB
- High in Vitamin D
- For supplemental nutrition
- Vanilla flavour

### ENSURE® PLUS ADVANCE

Get Stronger On-The-Go



220ML

- 1.5 kcal/ml
- High in protein (20g/serve)
- 1.5g CaHMB/serve (Calcium  $\beta$ -hydroxy- $\beta$ -methylbutyrate)
- For supplemental nutrition
- Vanilla flavour

### ENSURE® NUTRITION SHAKE

Strength-On-The-Go



237ML

- 1.0 kcal/ml
- 9.0g protein/serve
- For supplemental nutrition
- Vanilla flavour

### ENSURE® LIQUID

For Daily Nutrition



250ML

- 1.0 kcal/ml
- 9.3g protein/serve
- Low residue
- For sole source of nutrition or supplementation
- Vanilla & strawberry flavours

### ENSURE® PLUS

For Increased Nutritional Needs



200ML



200ML 220ML

- 1.5 kcal/ml
- 12.5g protein/serve
- Low residue
- For sole source of nutrition or supplementation
- Vanilla, strawberry, raspberry, chocolate, coffee and savoury flavours

### ENSURE® COMPACT



125ML

- 300 kcal in low volume
- 12.5g protein
- Improves compliance
- For supplemental nutrition

ABBOTT LABORATORIES (S) PTE LTD  
3 Fraser Street, #23-28  
DUO Tower  
Singapore 189352

For more information,  
contact your Abbott Sales  
Representative or visit:



Abbott Nutrition  
Information Centre  
ANIC.sg

Advancing Knowledge, Enhancing Patient Care

# SPECIALIZED NUTRITION FOR PATIENTS WITH THERAPEUTIC NEEDS

Modified proportions of protein, carbohydrate and fat with 28 vitamins and minerals. Lactose-Free. Gluten-Free.

## DIABETES

### GLUCERNA® TRIPLE CARE



400/850G 230ML

- Low glycemic index (GI)
- Slow-release carbohydrate
- 1.0 kcal/ml
- For sole source of nutrition (powder) or supplementation (powder & liquid)
- Vanilla flavour

### GLUCERNA® PLUS 1.5KCAL



220ML

- Low glycemic index (GI)
- Slow-release carbohydrate
- 1.5 kcal/ml
- High in protein (16.5g/serve)
- For sole source of nutrition or supplementation
- Coffee flavour

### GLUCERNA®



250ML

- Isotonic formula
- Low glycemic index (GI)
- 1.0 kcal/ml
- 10g protein/serve
- For sole source of nutrition or supplementation
- Vanilla flavour

## CHRONIC KIDNEY DISEASE

### NEPRO® HP For Dialysis Patients



220ML

- High in protein (17.8g/serve)
- Low potassium, phosphorus & sodium
- Slow-release, low-GI carbohydrate complex
- 1.8 kcal/ml
- For sole source of nutrition or supplementation
- Vanilla flavour

### NEPRO® LP For Non-Dialyzed Patients



220ML

- Lower\* in protein (9.9g/serve)
- Low potassium, phosphorus & sodium
- Slow-release, low-GI carbohydrate complex
- 1.8 kcal/ml
- For sole source of nutrition or supplementation
- Vanilla flavour

## CANCER-INDUCED WEIGHT LOSS

### PROSURE®



380G

220 ML

- High in protein (16g/serve - powder; 14.6g/serve - liquid)
- With EPA (Eicosapentaenoic acid)
- Lower in fat#
- 1.3 kcal/ml
- For supplemental nutrition
- Vanilla (liquid) & orange (powder) flavours

## LONG TERM TUBE-FEEDING



237ML

### JEVITY®

- Isotonic formula
- 3.4g fiber/serve
- With MCT (medium chain triglycerides)
- 1.0 kcal/ml
- 10.4g protein/serve
- For sole source of nutrition

## CHRONIC OBSTRUCTIVE PULMONARY DISEASE



237ML

### PULMOCARE®

- Lower# in carbohydrate
- 14.8g protein/serve
- Low glycemic index (GI)
- With MCT (medium chain triglycerides)
- 1.5 kcal/ml
- For sole source of nutrition or supplementation
- Vanilla flavour

\*Compared to Nepro HP  
#Compared to Ensure Plus

# HELP YOUR PATIENTS LIVE LIFE STRONGER

## The NOURISH study<sup>1</sup>:

Investigated the impact of **Ensure<sup>®</sup> Plus Advance** high-protein oral nutritional supplement with **HMB** ( $\beta$ -hydroxy- $\beta$ -methylbutyrate)



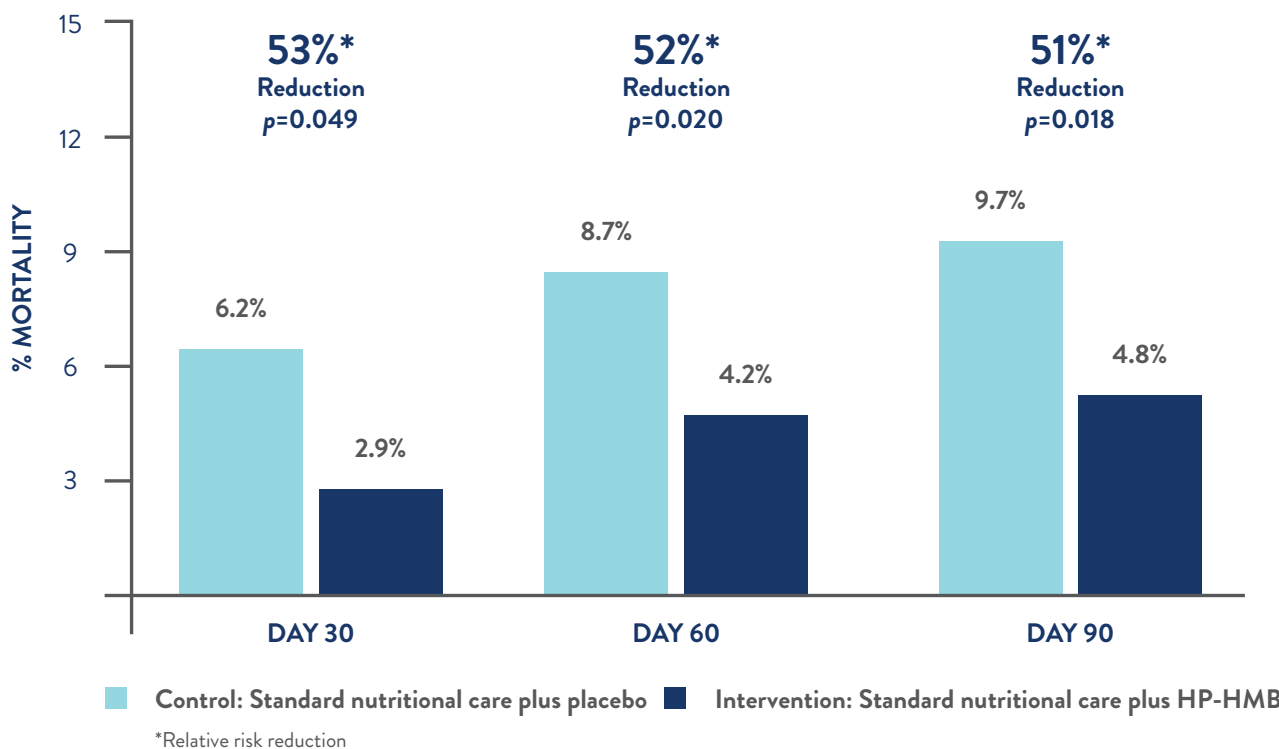
**Objective:** Evaluation of a high-protein oral nutritional supplement containing  $\beta$ -hydroxy- $\beta$ -methylbutyrate (HP-HMB) on post discharge outcomes of non-elective readmission and mortality in malnourished, hospitalized older adults.

**Patient population:** 652 malnourished hospitalized patients aged  $\geq 65$  years with congestive heart failure, acute myocardial infarction, pneumonia, or chronic obstructive pulmonary disease were randomised to placebo or Ensure<sup>®</sup> Enlive (US brand of Ensure<sup>®</sup> Plus Advance), in addition to standard nutritional care.

**Primary Composite Endpoint:** Readmission or mortality through 90 days post-discharge



## Ensure<sup>®</sup> Plus Advance Decreased Mortality Through 90 Days Post-Hospital Discharge<sup>1</sup>



For Medical Professionals Only

Reference: 1. Deutz NE et al. Clin Nutr; 2016; 35:18-26



ENS170418